



## WEEKLY CONSTRUCTION UPDATE

|  |                                |                                     |
|--|--------------------------------|-------------------------------------|
| <b>Project Title:</b> Whitman 20-Inch Force Main Replacement<br>CWSRF - 6885 |                                | <b>Report #:</b> EP - 10-28-2022    |
| <b>Project Location:</b> Brockton, MA<br>and Whitman, MA                     | <b>From:</b> 10/24/2022        | <b>Week:</b> 28                     |
| <b>Client:</b> Whitman, MA   | <b>To:</b> 10/28/2022          | <b>Engineer Project #:</b> 279-1901 |
| <b>On-Site Engineer:</b> Bob Fitzgerald,<br>Environmental Partners           | <b>Contact:</b> (508) 776-7556 |                                     |
| <b>Contractor:</b> C. Naughton Corp.   |                                |                                     |

### CONSTRUCTION ACTIVITIES COMPLETED THIS WEEK:

1. C. Naughton had one crew continuing the installation of the 20-inch PVC sewer force main on Southfield Drive in Brockton this week. C. Naughton installed approximately 135 LF of the new 20-inch PVC sewer force main and associated fittings along the roadway.
2. C. Naughton had a second crew beginning the installation of the new 20-inch HDPE sewer force main in the cross-country easement off Thatcher Street. C. Naughton installed approximately 150 LF of the new 20-inch PVC sewer force main and associated fittings within the easement.
3. No work occurred on Monday 10/24 as a result of rain. Work was called off early on Wednesday 10/26 as a result of rain.

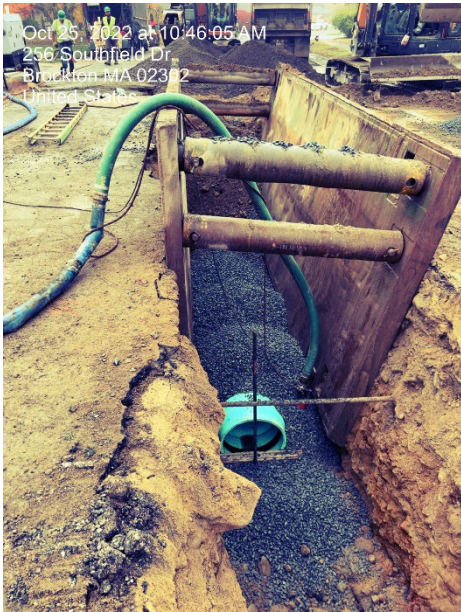
### WEEK LOOK-AHEAD SCHEDULE:

1. C. Naughton will have two crews (at a minimum) on site next week (week of 10/31/2022): one crew one crew continuing the installation of the 20-inch PVC sewer force main on Southfield Drive and one crew continuing the installation of the new 20-inch HDPE sewer force main in the cross-country easement off Thatcher Street.
2. C. Naughton will have all roads open to traffic next week. Daily traffic updates to the Town's project website will be posted to alert residents of anticipated road closures and detours.

# PROJECT PHOTOS



*Photo 1: Cross-Country Easement Operations*



*Photo 2: New Sewer Force Main Installation on Southfield Drive*



*Photo 3: New Sewer Force Main Installation in Cross-Country Easement*

**Prepared By:** Andrew Grota, Project Manager, Environmental Partners Group, LLC