



## WEEKLY CONSTRUCTION UPDATE

<b>Project Title:</b> Whitman 20-Inch Force Main Replacement CWSRF – 6885	<b>Report #:</b> EP – 1-27-2023	
<b>Project Location:</b> Brockton, MA, and Whitman, MA	<b>From:</b> 1/23/2023	<b>Week:</b> 40
<b>Client:</b> Whitman, MA	<b>To:</b> 1/27/2023	<b>Engineer Project #:</b> 279-1901
<b>On-Site Engineer:</b> Bob Fitzgerald, Environmental Partners		<b>Contact:</b> (508) 776-7556
<b>Contractor:</b> C. Naughton Corp.		

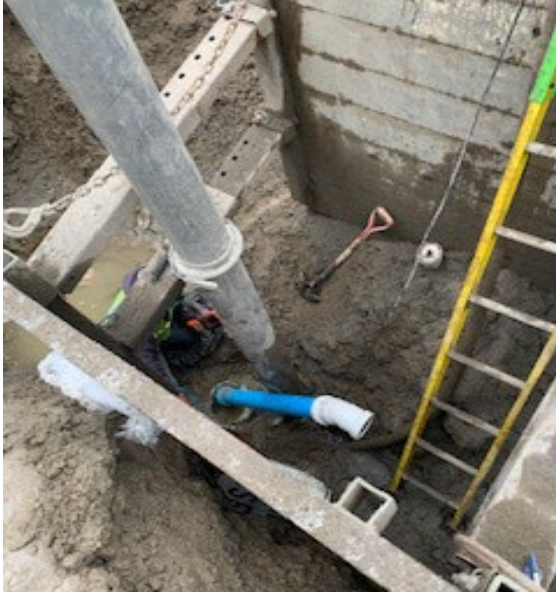
### CONSTRUCTION ACTIVITIES COMPLETED THIS WEEK:

1. No work occurred on Monday, 1/23, Thursday, 1/26, and Friday, 1/27.
2. On Tuesday, 1/24, C. Naughton mobilized one crew on Auburn Street in Whitman to install a 20"x4" tee connection for the Auburn Street West Pump Station. The crew installed approximately 18 feet of 4" PVC pipe and one plug valve for this connection.
3. On Wednesday, 1/25, C. Naughton mobilized one crew on Auburn Street in Whitman to install a 20"x4" tee connection for the Auburn Street East Pump Station. However, the work was cut short due to the close proximity of the tee connection work to the existing Brockton 24" water main on Auburn Street. Brockton Department of Public Works personnel were on-site and requested that work be postponed until a later date when Brockton could assign personnel once C. Naughton provides adequate advanced notice for performing this work. Therefore, work was canceled for the day.
4. All areas were backfilled, compacted, and paved prior to leaving for the weekend.

### WEEK LOOK-AHEAD SCHEDULE:

1. C. Naughton will have one crew on-site on Monday, 1/30 (week of 1/30/2023) on Auburn Street in Whitman to continue installing fittings inside the air release valves manholes and blow-off/cleanout manholes along the force main alignment.
2. C. Naughton anticipates maintaining one lane of alternating traffic on Auburn Street while work is ongoing. Access for residents and emergency vehicles will be maintained while work is ongoing.
3. Daily traffic updates to the Town's project website will be posted to alert residents of any planned roadway closures and detours.

## PROJECT PHOTOS



*Photo 1: Excavation for Force Main Connection at Auburn Street West PS*



*Photo 2: Excavation for Force Main Connection at Auburn Street East PS*



*Photo 3: Dewatering of Excavation on Auburn Street*

**Prepared By:** Javier Avila, Engineer, Environmental Partners Group, LLC

**Reviewed By:** Andrew Grota, Project Manager, Environmental Partners Group, LLC